

# HCR900D

With the HCR900D, countless new doors are opened in terms of heavy demolition. Its size combined with its capacity make the HCR900D ideal for the heaviest and most demanding jobs. HCR900D weighs a hefty 12 tons and has an arm system with a full reach of 10 meters. Both the size and range of the HCR900D demonstrate just how impressive of a force this machine can be. The HCR900D has more hitting power than any other remote-controlled demolition robot on the market.

## Widely used in:

- Nuclear industry
- Tunnel excavation
- Construction demolition
- Metal processing industry



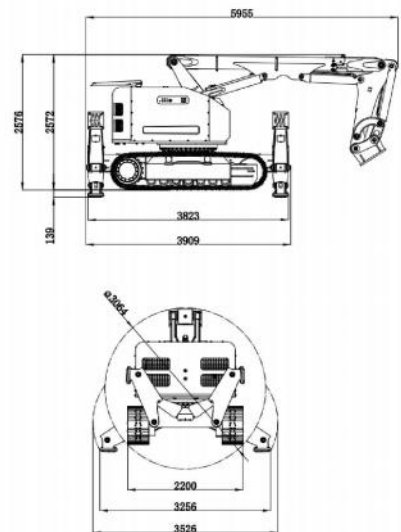
## TECHNICAL DATA

Slewing speed	16 s/360°
Transport speed, max.	1.8/3.2 km/h
Incline angle, max.	30°
Hydraulic system capacity	230 L
Pump type	Variable load-sensing
System pressure	18.5/25 MPa
Pump flow	0-148 L/min
Electric motor type	ABB/YANMAR
Output	55/61 kW
Fuse	/
Starting device	Direct start
Control type	Portable control box
Signal code	Digital
Transfer	Professional radio/Cable
Range, radio	100 m
Weight of machine excluding attachment	12000 kg
Recommended attachment weight	1500 kg

## OPTION

Working attachments such as buckets and hydraulic shears
Rubber track/steel track
Mechanical quick coupling
Forced air cooling
Oil cylinder special protection
Hydraulic hammer water jet function
Backup oil circuit (extra hydraulic function)
Track steel pads/other chisels
High temperature hose/nuclear protection
Hydraulic oil circuit automatic conduction quick coupling/hydraulic wrist
Remote video system, sensors
Fire cannon, booster and bulldozer

## SIZE



## RANGE

