

HCBHR-7567-D



● **Characteristic:**

- Effective radius coverage, larger range
- Integrated design of working device is equipped with heavy duty hydraulic cylinder, high strength and high reliability
- Flexible operation of the arm ensures precise positioning
- Electric proportional control, hydraulic vibration crushing, silent and efficient
- Equipped with a large rotary bearing, 360 ° rotation, and the pipeline is not entangled

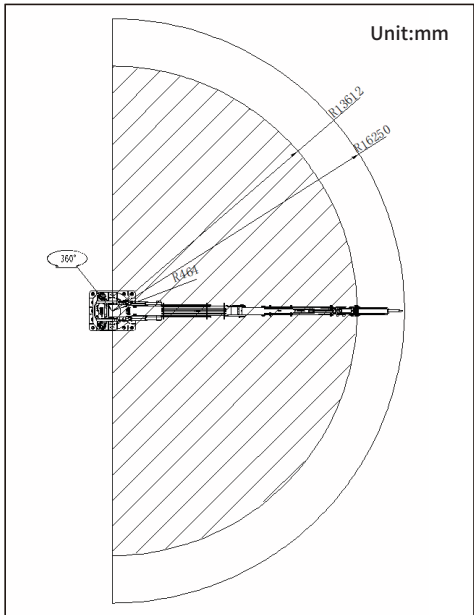
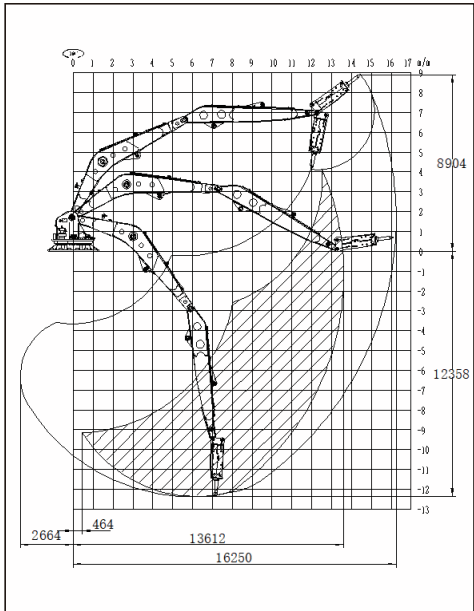
PERFORMANCE	
Boom hoist length (mm)	7500
Dipper stick length (mm)	6700
Max. horizontal working radius (mm)	16250
Max. vertical working radius (mm)	13612
Max. working depth (mm)	12358
Structural form of working arm main beam	Large box design, welded with high tensile strength carbon steel Q3458B
Weight of machine excluding attachment(kg)	21000

HYDRAULIC HAMMER	
Hydraulic hammer model	HC140
Hydraulic hammer operating pressure	16-18 MPa
Hydraulic hammer oil flow	120-180 L/min
Blow frequency	350-450 bpm
Chisel diameter	φ140 mm
Suitable for hydraulic hammer models	HC100/HC125/HC140

CONTROL SYSTEM	
Control mode	Operation joystick + emergency mechanical manual + wireless remote control + teleoperation system
IP grade of motor	IP55
IP grade of controller	IP67

HYDRAULIC POWER UNIT	
Motor power	55 kW/75 kW/90 kW

RANGE



Application:

