

HCBMR-6535-D



• Characteristic:

- Effective radius coverage, larger range
- Integrated design of working device is equipped with heavy duty hydraulic cylinder, high strength and high reliability
- Flexible operation of the arm ensures precise positioning
- Electric proportional control, hydraulic vibration crushing, silent and efficient
- Equipped with a large rotary bearing, 360 ° rotation, and the pipeline is not entangled

PERFORMANCE

Boom hoist length (mm)	6500
Dipper stick length (mm)	3500
Max. horizontal working radius (mm)	12113
Max. vertical working radius (mm)	9490
Max. working depth (mm)	8882
Structural form of working arm main beam	Large box design, welded with high tensile strength carbon steel Q3458B
Weight of machine excluding attachment(kg)	10000

HYDRAULIC HAMMER

Hydraulic hammer model	HC140
Hydraulic hammer operating pressure	16-18 MPa
Hydraulic hammer oil flow	120-180 L/min
Blow frequency	350-450 bpm
Chisel diameter	φ140 mm
Suitable for hydraulic hammer models	HC100/HC125/HC140

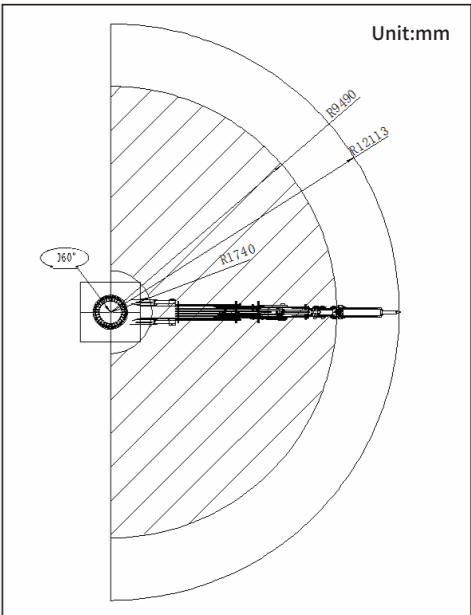
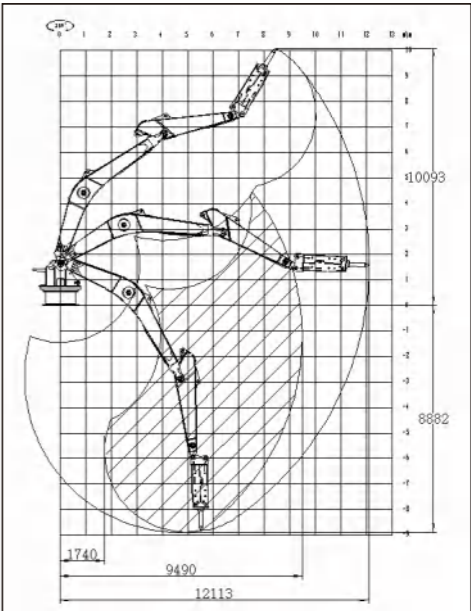
CONTROL SYSTEM

Control mode	Operation joystick + emergency mechanical manual + wireless remote control + teleoperation system
IP grade of motor	IP55
IP grade of controller	IP67

HYDRAULIC POWER UNIT

Motor power	55 kW/75 kW/90 kW
-------------	-------------------

RANGE



Application:

