

HCBMR-5540-D



• **Characteristic:**

- Compact structure, effective radius coverage, suitable for narrow spaces
- Integrated design of working device is equipped with heavy duty hydraulic cylinder, high strength and high reliability
- Flexible operation of the arm ensures precise positioning
- Electric proportional control, hydraulic vibration crushing, silent and efficient
- Equipped with a large rotary bearing, 360 ° rotation, and the pipeline is not entangled

PERFORMANCE

Boom hoist length (mm)	5500
Dipper stick length (mm)	4000
Max. horizontal working radius (mm)	11010
Max. vertical working radius (mm)	8856
Max. working depth (mm)	7608
Structural form of working arm main beam	Large box design, welded with high tensile strength carbon steel Q3458B
Weight of machine excluding attachment(kg)	7100

HYDRAULIC HAMMER

Hydraulic hammer model	HC100
Hydraulic hammer operating pressure	15-17 MPa
Hydraulic hammer oil flow	80-110 L/min
Blow frequency	350-700 bpm
Chisel diameter	φ100 mm
Suitable for hydraulic hammer models	HC75/HC85/HC100/HC125

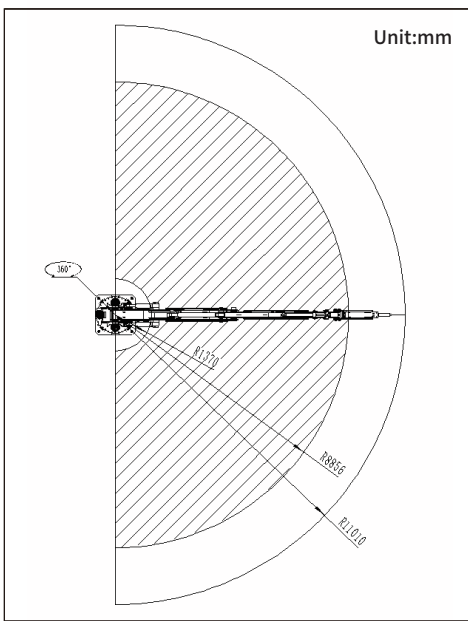
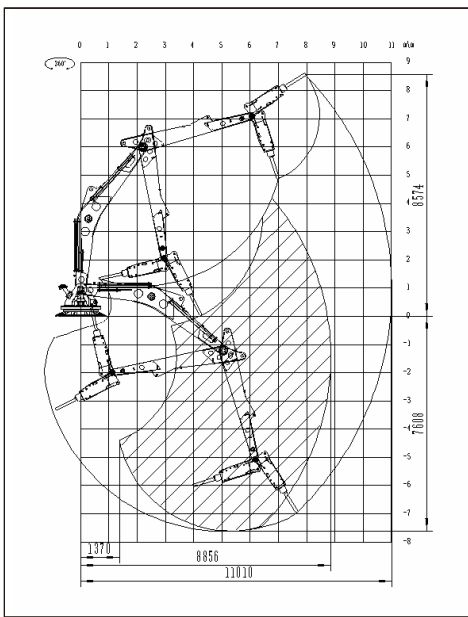
CONTROL SYSTEM

Control mode	Operation joystick + emergency mechanical manual + wireless remote control + teleoperation system
IP grade of motor	IP55
IP grade of controller	IP67

HYDRAULIC POWER UNIT

Motor power	30 kW/37 kW/55 kW
-------------	-------------------

RANGE



Application:

